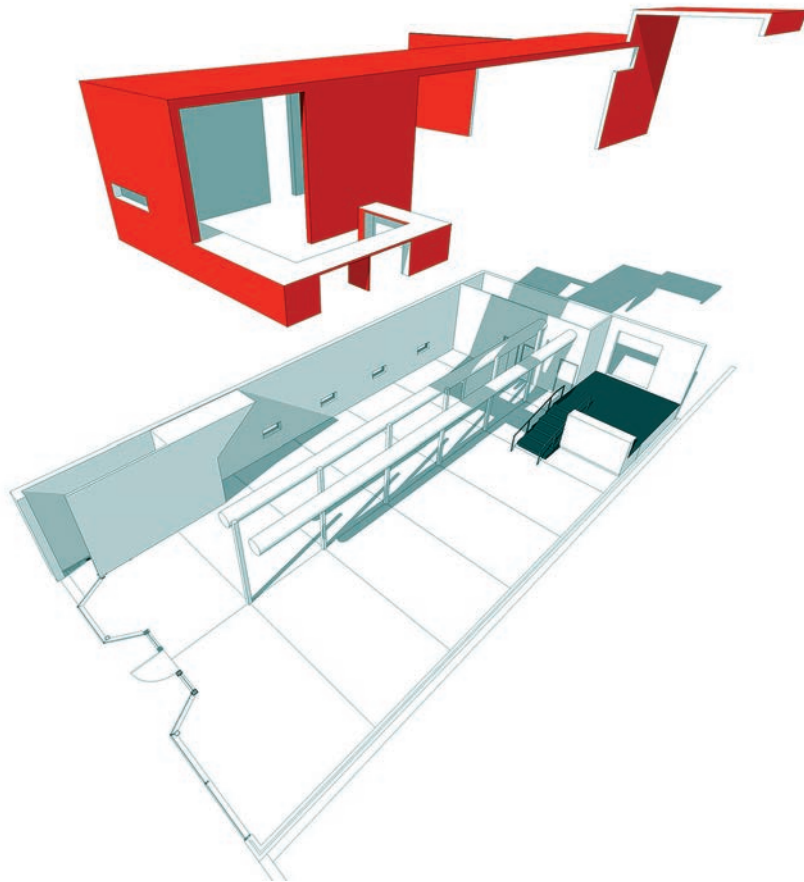


# SPATIAL STRATEGIES FOR INTERIOR DESIGN



# Contents

- 06 Introduction
- 06 What is interior design?
- 07 Modernism and the free plan
- 09 About this book
  
- 10 **Chapter 1**  
**Points of departure**
- 12 Introduction
- 12 The existing site
- 14 Case study: The existing site – Trace Architecture Office / Trace Architecture
- 16 The client
- 18 Case study: The client – DAKS / Alex Nevedomskis
- 19 The building programme
- 21 Case study: The building programme – Sushi-teria restaurant / form-ula
  
- 22 **Chapter 2**  
**The use of precedent studies**
- 24 Introduction
- 24 Learning from history
- 26 Site precedents
- 27 Organization precedents
- 28 Case study: Spatial precedents: a space within a space – Glass House / Philip Johnson
- 30 Circulation precedents
- 32 Case study: Circulation precedent: a controlled pathway – Ikea and Tiger stores
- 33 Learning from other disciplines
  
- 34 **Chapter 3**  
**Developing conceptual ideas**
- 36 Introduction
- 38 Conceptual starting points
- 39 Concepts based on the client
- 40 Step by step: Developing a conceptual idea
- 41 Concepts based on the programme
- 42 Concepts based on the site
- 43 Case study: Design concepts (1) – Cargo / group8
- 44 Concepts based on the design approach
- 45 Case study: Design concepts (2) – Mississippi Blues restaurant / Stanley Saitowitz | Natoma Architects
  
- 46 **Chapter 4**  
**Planning strategies**
- 48 Introduction
- 48 Spatial relationships
- 56 Spatial strategies
- 58 Step by step: Drawing diagrams
- 64 Circulation strategies
- 68 Case study: Entrance – Art Gallery / Adolf Krischanitz
- 69 Circulation and space
- 74 Planning solutions
- 76 Case study: Planning solutions – Shine boutique / LEAD and NC Design & Architecture
  
- 78 **Chapter 5**  
**From brief to proposal**
- 80 Introduction
- 81 The brief
- 83 Spatial requirements
- 86 Step by step: Drawing planning diagrams
- 88 Case study: COS stores / William Russell, Pentagram
- 90 Planning diagrams
- 92 Relating the planning diagram to the site
- 96 Case study: Exhibition – ‘Rogers Stirk Harbour + Partners – From the House to the City’ / Ab Rogers Design

98	<b>Chapter 6</b> <b>The existing building's impact</b>	150	Responding to the existing site
100	Introduction	152	Sectional models
101	Analyzing an existing building	154	<b>Chapter 9</b> <b>Communicating spatial organizations</b>
105	Introducing new into existing	156	Introduction
108	Intervention	156	Useful drawing types
110	Case study: Intervention – Black Pearl House / Studio Rolf in partnership with Zecc Architects	167	Case study: Communicating a spatial concept – Hair salon proposal, Oliver Corrin
112	Insertion	168	Freehand/sketch drawings
114	Case study: Insertion – Silence Room, Selfridges department store / Alex Cochrane Architects	170	Step by step: Creating freehand drawings
116	Installation	171	Models
118	Case study: Installation – KMS Team studio / Tools Off.Architecture	174	<b>Chapter 10</b> <b>What next?</b>
120	<b>Chapter 7</b> <b>Developing three-dimensional spatial compositions</b>	176	Introduction
122	Introduction	177	Detailed planning
123	Defining space	178	Step by step: The design process
124	Case study: Forming spatial compositions – Glass House / Philip Johnson	180	Designing in detail
125	Exploring contrasts	184	Glossary
132	Forming spatial compositions	185	Further reading
137	Case study: Exploring contrasts – Cahier d'Exercices boutique / Saucier + Perotte Architectes	186	Index
139	Step by step: Exploratory modelmaking	190	Picture credits
140	<b>Chapter 8</b> <b>Designing in section</b>	192	Acknowledgements
142	Introduction		
143	Manipulating volumes		
144	Step by step: Exploring the opportunities offered by the section		
146	Case study: Designing in section (1) – Canary Wharf Underground Station / Foster + Partners		
148	Simple plans, complex sections		
149	Case study: Designing in section (2) – Proposed dental surgery / Sam Leist		